



SUPREME EAGLE III

The fastest, most scalable NIKSUN Platform. Ever.



DATASHEET

NIKSUN Supreme Eagle was found to defy the adage of “next-generation” products . . . “If you have a large mission-critical data stream, you cannot afford not to give [Supreme Eagle] a close look.”

*- Dr. Peter Stephenson
Technology Editor, SC Magazine*

Challenge

Big Data networks are burdened by exponential rises in traffic volume, velocity, variety, veracity, and value (aka the 5-Vs) of traffic. Those relying on these networks increasingly demand speed and reliability to drive efficient decision-making, from anywhere at any time on any device. Such communication superhighways must be monitored to secure and support the traffic of machine-to-machine (M2M) transactions, always-on devices and a seemingly infinite number of bandwidth hungry applications. As such, if your network can't control 5-V traffic production from the edge to the network core, then your entire organization is at risk of collapse - irrespective of whether you are defending and protecting mission critical networks in a military agency, cloud service provider, data center, or financial institution.

Revolution, Not Just Evolution

After the revolutionary Supreme Eagle I and Supreme Eagle II, we now unleash the power of the 3rd generation NIKSUN Supreme Eagle III (SE-III). NIKSUN® Supreme Eagle® III, a single unit data capture and cyber-analytics platform designed to tackle any analytics need. SE-III was created from the ground up with a proprietary parallel processing architecture. With a strong pedigree of best-in-class security, mobility, and performance monitoring solutions, Supreme Eagle III is a modular hardware platform which works across thousands of cores efficiently, provides line rate capture, and ultra-fast query response time, aptly developed for today's big data challenges. Designed to accomplish the impossible, Supreme Eagle III accelerates each of its system components to ensure that full line rate processing well into Multi-Tbps is achieved without dropping a single packet and supports virtually unlimited storage.

NIKSUN's new Supreme Eagle III delivers:

20x more
computing power

5x higher
storage density

60% less
power consumption

Finally, a Big Data Solution

Unlike other industry offerings, Supreme Eagle III eliminates the chaos of data overload. Its proprietary parallel processing architecture combats increasing volume of traffic flow rates. Revolutionizing monitoring with continuous and high speed lossless packet capture well into Multi-Tbps,

Supreme Eagle III is multiple times more efficient in comparison to other industry offerings. Together, its speed and power lead to the fastest incident prevention, containment and management to protect and optimize data centers and large scale networks.

In response to organizational growth, underlying networks expand and transform. Correspondingly, Supreme Eagle III is purpose-architected to scale with network expansion and to satisfy increasing traffic velocity and volume. It scales to exponential rises in traffic volumes and combats increasing traffic flow rates. Supreme Eagle III's modular building block design provides a unique solution that can grow along with your network, yet save considerably in operational expenditures as it is highly optimized in space, power, processing, and storage.

Fault Tolerant, Data Center Ready

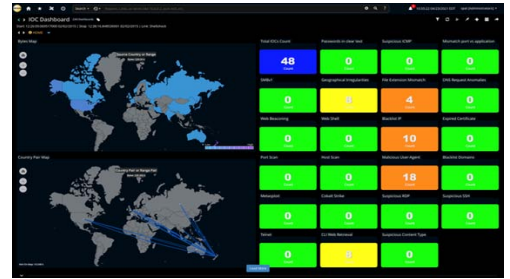
Supreme Eagle III transforms the whole data center experience by minimizing the clutter of disparate processors with its robust grid and cluster computing architecture. Supporting nearly limitless expansion, as your security and analysis requirements grow, simply scale up with NIKSUN.

- » **Cluster Computing:** Ready for clustering and scalable performance
- » **Grid Computing:** Out-of-the-box ready for distributed processing and analysis
- » **Fault Tolerant Hardware:** Designed with component and system level fault tolerant hardware
- » **Hot Swap Components:** Built in redundancy and hot swap capabilities
- » **NEBS Compliant:** Ready for telecom and ISP networks

Next-generation Product

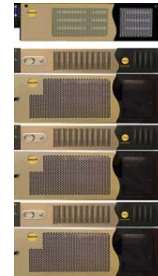
Designed with the latest in high speed, multicore processors, expandable memory options, multi-threaded architecture, the Supreme Eagle III ensures data capture, processing and analysis at the fastest speeds possible. Each component of the system has been designed to maximize efficiency and ensure state-of-the-art performance, across the board.

Keeping up with the 5-V explosion in data requires a platform not only capable of delivering performance to meet current demands, but exceeding those requirements through an innovative design partnered with the technical ingenuity of a company committed to that level of excellence in every part of systems design and architecture. Combining seamlessly high performance and data center network traffic capture with simultaneous analysis, undoubtedly, NIKSUN Supreme Eagle III is the only solution operational at 10+ Tbps across large scale cloud networks!



Technical Information

- » *Form Factors: A variety of form factors are available. Supreme Eagle III is suitable for high speed cloud provider grade network deployments with extensive storage requirements.*
- » *Integration: Supreme Eagle III can integrate with any combination of NIKSUN monitoring software solutions.*



Interested in learning more?

For more information, please visit us online at niksun.com.



457 North Harrison St. • Princeton • NJ 08540 • USA
t: +1.609.936.9999 • toll free: +1.888.504.3336
f: +1.609.419.4260
info@niksun.com • www.niksun.com

NIKSUN, NIKSUN Logo, and other NIKSUN marks are either registered trademarks or trademarks of NIKSUN, Inc. in the United States and/or other countries. Other product and company names mentioned herein may be the trademarks of their respective owners. For more information, including a complete list of NIKSUN marks, visit NIKSUN's website at www.niksun.com. Copyright© 2022 NIKSUN, Inc. All rights reserved. NK-DS-SE-0222