



Virtual NetVCR™

Virtualized Solution for Proactive Network, Service, and Application Monitoring

Features & Benefits

- » *Eliminates network blind spots with proactive monitoring of traffic within a virtual server*
- » *Traffic capture and multi-time-scale analysis for scalable traffic rates*
- » *Real-time alerts of various QoS metrics replacing manual troubleshooting processes with proactive discovery, classification, and analysis of diverse applications and protocols*
- » *Rich Executive dashboards and comprehensive reports for automated and optimized workflows*
- » *Visibility into network for capacity planning, trending, accounting, and usage*
- » *Awarded Common Criteria Certification by the National Information Assurance Partnership (NIAP) which is operated by the National Security Agency*
- » *Ad-hoc and scheduled reporting on multiple timescales (subseconds to months) for both real-time operations and strategic decision making*
- » *Plug-and-play device with intuitive web-based interface with role-based access control (RBAC)*
- » *Drill down to packet-level information for granular deep-packet analysis*

NIKSUN Virtual NetVCR is the world's first full-function appliance for advanced real-time network, service, and application performance monitoring that provides zero-loss packet capture not impacted by other processes. Virtual NetVCR intelligently integrates vital management functions into a single scalable platform to facilitate:

- » Executive dashboards and comprehensive reports
- » Proactive end-to-end SLA/QoS monitoring and surveillance
- » Continuous, interactive analysis from link to application
- » Multi-timescale analysis (sub-milliseconds to months)
- » Real-time and historical expert analysis
- » Multi-timescale ad-hoc and scheduled reporting (sub-milliseconds to months)

Network and Application Performance Monitoring

Providing 100% visibility into infrastructure in multiple timeframes (from sub-milliseconds to months), NIKSUN Virtual NetVCR recognizes a multitude of protocols and applications for proactive discovery, classification, correlation, and real-time analysis with just a few mouse clicks!

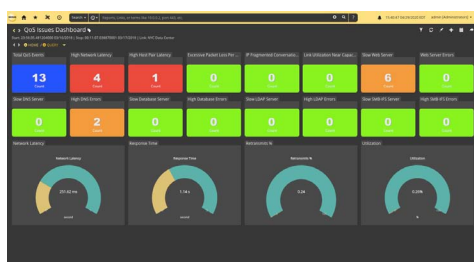
NIKSUN Virtual NetVCR provides a wide array of benefits including:

- » Proactive alerting from link to application
- » Point-and-click diagnostics and troubleshooting
- » QoS management and reporting
- » Capacity planning/trending
- » Accounting/usage
- » Application/services monitoring (including e-commerce, email, VoIP, multicast, FIX, custom applications, etc.)
- » Performance analysis (e.g., loss, delay, latency, jitter, service/application response, throughput, etc.)
- » Seamless integration with other management systems

NIKSUN Virtual NetVCR's consolidation of critical infrastructure and application monitoring and analysis capabilities makes it a highly valuable solution that immediately replaces multiple monitoring/troubleshooting devices and empowers enterprises with the key advantages of automation, triage, and cost-efficient instrumentation.

Proactive End-to-End SLM and QoS Monitoring

NIKSUN Virtual NetVCR continuously monitors both inbound and outbound traffic, applications and services at real-time production traffic rates, and simultaneously captures, timestamps, and indexes full packets in the NIKSUN Network Knowledge Warehouse (NKW) for zero loss monitoring of enterprise, carrier, and ISP networks and services while also generating intelligence for insightful analytics. All traffic is analyzed in real-time at line speeds and alerts



immediately inform users of service interruptions or infrastructure/application degradation as soon as they occur. Each alert is linked to contextual analysis and corresponding packet information, giving users the option to immediately hone in to the sub-millisecond level for troubleshooting and root-cause discovery.

Combine Visibility Across Physical and Virtual Networks

Appliances can be deployed across multiple virtual servers and within a private or public cloud for complete monitoring across your virtual infrastructure, providing a complete view of the virtual world, including both north-south and east-west traffic. Traffic from deployed appliances can also be pulled into NIKSUN NetOmni to present a unified view across virtual, LAN, WAN, and MAN environments.

Multi-timescale Analysis Across All OSI Layers

NIKSUN Virtual NetVCR supports multi-timescale analysis (from sub-millisecond levels to minutes, hours, days, or even months) and multi-level drill-down (Link to Application layer), enabling users to start at a high-level view and pivot to an application and/or hosts for detection and analysis of short-lived events that are undetectable when data is aggregated by the minute, resulting in reduced mean-time-to-resolution (MTTR).

Bounce diagram analysis visualizing each stage of an application session facilitates even faster diagnostics.

Real-time and Historical Expert Analysis and Performance Alarming

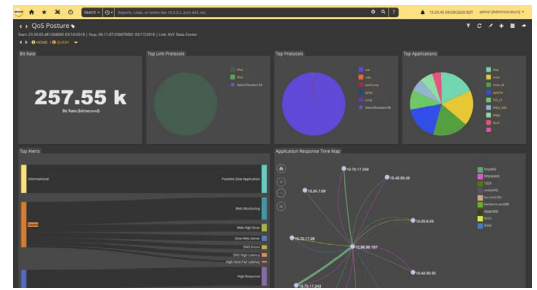
Optional capabilities available via add-on NetXperts and NetSLM modules, further reduce MTTR by providing both real-time and historical advanced analysis and alarming from Link to Application layer.

Multi-timescale Ad-hoc and Scheduled Reporting

NIKSUN Virtual NetVCR provides highly customizable reports generated on-demand or on a predefined schedule to suit the needs of both senior management and supporting staff.

Quick, real-time operational reports spanning extremely flexible time frames of sub-milliseconds to minutes or hours or days maximizes operational efficiency, while long-term reports spanning months or even years of network history assist in strategic decision making, planning, trending, optimization, and change control.

With NIKSUN Virtual NetVCR's unlimited storage options, it is possible to archive network information for extremely long periods of time.



Technical Information

- » *Database Size - 1TB / 4TB*
- » *Network Interfaces Supported - 1Gbps / 10Gbps*
- » *Protocols Supported - TCP, UDP, SCTP, IPv4, IPv6, fragmented IP, IEEE 802.3 (Ethernet), Ethernet MPLS, VLAN (ISL, IEEE 802.1q and stacked 802.1q), DNS, ISO8583, GTP, SIP, CDMA2000, RADIUS, Diameter and others as well.*
- » *Virtual/Cloud Support and Management - OpenStack [Kilo, Liberty, Mitaka, Newton, Ocata, Train]; KVM; VMWare ESX/ESXi [5.x, 6.x]; AWS; XEN; Hyper-V; Oracle VM*
- » *Integration - Authentication - TACACS+, RADIUS, LDAP, Active Directory, and CAC. All NIKSUN products integrate with NIKSUN NetOmni™ Full Suite for enterprise-wide data aggregation, reporting, and visualization.*

Interested in learning more?

For more information, please visit us online at niksun.com.



457 North Harrison St. • Princeton • NJ 08540 • USA
t: +1.609.936.9999 • toll free: +1.888.504.3336
f: +1.609.419.4260
info@niksun.com • www.niksun.com

NIKSUN, NIKSUN Logo, and other NIKSUN marks are either registered trademarks or trademarks of NIKSUN, Inc. in the United States and/or other countries. Other product and company names mentioned herein may be the trademarks of their respective owners. For more information, including a complete list of NIKSUN marks, visit NIKSUN's website at www.niksun.com. Copyright© 2021 NIKSUN, Inc. All rights reserved. NK-DS-VNetVCR-1021-1.0