

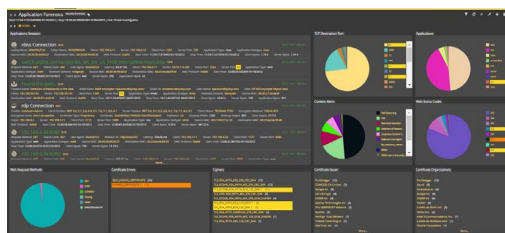


# NetOmni™

*Global Visibility. Single Access*

## Features & Benefits

- » *Complete aggregation and correlation of data, security incidents, application performance, VoIP, logs, SNMP, NetFlow, alarms, etc.*
- » *Visualize data from multiple NIKSUN deployments (physical or virtual) from a single pane of glass*
- » *Store data for months and years for historical and forensic traceability*
- » *Centralized web-based management console for physical, virtual, and cloud infrastructure unifying distributed NIKSUN intelligence*
- » *Real-time alerts of different QoS metrics and IOCs regulatory and internal company policy violations*
- » *Reconstruct application sessions and policy violations for audits and evidence*
- » *Rich Executive dashboards and comprehensive reports for automated and optimized workflows via NIKSUN NetXperts*
- » *Proactively discover, classify, and analyze diverse applications and protocols in minutes*
- » *Point-and-click diagnostics and troubleshooting*
- » *QoS, IOC metrics management and reporting*



*Dynamic Dashboard Views of Distributed Enterprise Network with NetOmni*

## Challenge

Typical modern enterprise networks consist of different geographically dispersed devices, servers, and work consoles each producing and consuming various data sources. These may include mission-critical data, voice, and video streaming. Monitoring and adjusting network functions for performance, processor load balancing, and security in such an environment is a challenge that is further amplified by the plethora of networking tools, each producing different granularity of metrics and alarms. As a result, obtaining timely and actionable network intelligence, reducing operating costs, and consolidation of network tools becomes a top business priority.

## Solution

Global visibility through a single point of access is possible with NIKSUN's NetOmni. It is a comprehensive enterprise network and service delivery management portal that provides top-down holistic view of business service performance, network disruptions, security incidents detection and forensics. NetOmni monitors all services and applications, as well as underlying network infrastructure in real-time and allows network administrators to configure network alerts for relevant information. NIKSUN NetOmni delivers consistency, efficiency, and affordability.

## Network at a Glance

NetOmni can communicate with remote NIKSUN appliances without the need for additional physical connectivity. These appliances monitor subsets of a global network for performance, security, and policy compliance.

Data visualization on NetOmni can be grouped as logical functions, businesses, regions, hosts, and users on customizable and user/service centric dashboards that offer high-level views into global network services via a distributed deployment of various NIKSUN appliances.

The NetOmni is capable of gathering intelligence from a variety of NIKSUN products, both virtual and physical, such as – NetVCR®, NetDetectorLive™, LogWave™, FlowAggregator™, NetPoller™, NetVoice®, NetMobility® and NetTradeWatch™. This enables powerful correlated dashboards and workflows from a single pane of glass.

Users and groups may be assigned to as many dashboards as needed. Each dashboard is equipped with a variety of graphical indicators that inform users on the status of services, applications, or servers. NetOmni offers:

- » Point-and-click diagnostics and troubleshooting
- » QoS, IOC metrics management and reporting

- » Threat intelligence, automated and proactive discovery
- » Application Reconstruction: classify and analyze many applications based on content
- » Capacity planning/trending
- » Accounting/usage
- » Advanced and granular forensics analytics
- » Application/services monitoring (including e-commerce, email, VoIP, multicast, FIX, custom applications, etc.)
- » Seamless integration with other management systems

## Central Management

A single-point management console that interfaces with NIKSUN network monitoring appliances across the enterprise network so remote deployment, event management and configuration is simple, streamlined, and audited. Software upgrades, backup/restoration, logs records, user access control/grouping, appliance status and health monitoring, etc. are all possible in a remote and secure manner.

## Long-term Archival for Reference, Analysis and Evidence

A NetOmni communicates with remote NIKSUN appliances that monitor various links across the network for performance, security, and policy compliance measurements. It aggregates distributed knowledge repositories into a single, virtualized enterprise-wide NIKSUN Network Knowledge (NKW). The NKW is a hierarchal, correlated collection of all enterprise network information. NetOmni collects information (e.g., Logs, NetFlow, SNMP, Packets, etc.) from all the network applications, services and their underlying infrastructure and prioritizes key service delivery, security, and compliance metrics. All of the information is available for long-term data retrieval from months to years. It can be presented and shared as insightful, contextual reports. Additionally, data collection and archival also improve query response time as data is readily available on the NetOmni.

## Remote Site and Group Reports

Information can be grouped by enterprise or business unit contexts, such as links, hosts, subnets, applications, organizations, or other criteria. This creates relevance within generated reports and provides contextual enterprise-wide data to profile, design, and ensure highly available services, etc. are all possible in a remote and secure manner.

NetOmni is offered in the following packages:

Feature	NetOmni Analytics	NetOmni Full Suite
Single point access to all the aggregated and correlated data, security incidents, application performance, VoIP, logs, SNMP, NetFlow, and alarms from remote NIKSUN Appliances.	•	•
Central remote appliance management console to administrate software upgrades, backup/restoration, alarms, logs, status, health, and many more.	•	•
Visualization and grouping of data as logical functions, businesses, regions, hosts, etc.	•	•
Multi-hop visual of the traffic monitored by remote appliances.	•	•
Live dashboards update, delivering real time view of the network and application.	•	•
Stores data for months and years for historical and forensics traceability.		•
Fast response time of long term data retrieval as it is readily available on NetOmni.		•

## Technical Information

- » *Form Factor - 3U form factor is available. Internal storage scales to tens of terabytes. Unlimited external storage options are available.*

### Integration:

- » *Authentication - TACACS+, RADIUS, LDAP, Active Directory, Kerberos, and CAC.*
- » *Third Party Network Performance and Security Management Products - HP ArcSight, ITRS, Junospace, McAfee, and Splunk.*
- » *Third Party Threat Intelligence Feeds: Flat file, STIX/TAXII, and CrowdStrike JSON.*

Interested in learning more?

For more information, please visit us online at [niksun.com](http://niksun.com).



457 North Harrison St. • Princeton • NJ 08540 • USA  
 t: +1.609.936.9999 • toll free: +1.888.504.3336  
 f: +1.609.419.4260  
 info@niksun.com • www.niksun.com

NIKSUN, NIKSUN Logo, and other NIKSUN marks are either registered trademarks or trademarks of NIKSUN, Inc. in the United States and/or other countries. Other product and company names mentioned herein may be the trademarks of their respective owners. For more information, including a complete list of NIKSUN marks, visit NIKSUN's website at [www.niksun.com](http://www.niksun.com). Copyright © 2020 NIKSUN, Inc. All rights reserved. NK-DS-NetOmni-0520