



## NetPoller

Network infrastructure monitoring plays a vital role in improving business outcomes for today's challenging and complex IT environments where day to day performance and availability become critical factors.

NIKSUN NetPoller® offers complete visibility, availability and health monitoring of your network. It provides real-time intelligence across your entire network by polling distributed network switches, servers, firewalls, and network components via SNMP.

- » Extensive multi-vendor MIB support for routers, switches, ports, and end points.
- » Monitoring of CPU load, memory usage, storage, and hardware health.
- » Inbound/Outbound bandwidth, packets, errors and discards trending with support for high capacity counters.
- » Monitors QoS pre and post policy traffic statistics, packet drops, and policy configurations and IP SLA operations.
- » NBAR application traffic monitoring to effectively prioritize your applications.
- » Seamless integration with Flow Aggregator for deeper analysis of applications and IP conversations.
- » Wireless AP and client monitoring.
- » Device discovery for detecting neighboring devices.

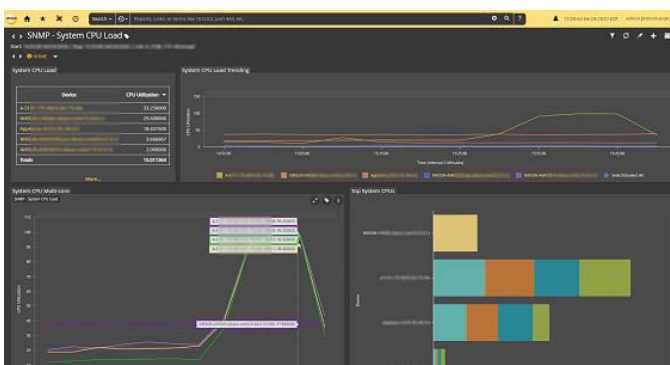
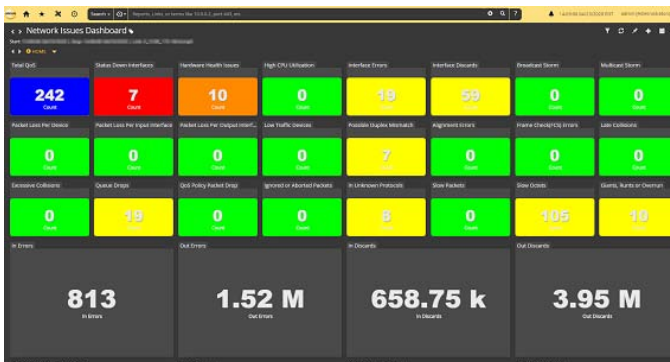
With NIKSUN's advancement into all areas, IT and business users are now equipped to correlate across all their data sources – Packets, Flow, SNMP, Logs, and Events.

## Technical Information

- » *NetFlow Versions Supported: (v5, v7, v9), IPFIX flow format and other flow types such as NetStream*
- » *SNMP Versions Supported - (v1, v2c, v3)*
- » *Form Factors - A variety of 3U and 3U+ form factors are available. Internal storage scales to tens of terabytes. Unlimited external storage options are available.*
- » *Integration - Authentication - TACACS+, RADIUS, LDAP, Active Directory, and CAC. All NIKSUN products integrate with NIKSUN NetOmni™ Full Suite for enterprise-wide data aggregation, reporting, and visualization.*

Interested in learning more?

For more information, please visit us online at [niksun.com](http://niksun.com).



457 North Harrison St. • Princeton • NJ 08540 • USA  
t: +1.609.936.9999 • toll free: +1.888.504.3336  
f: +1.609.419.4260  
info@niksun.com • www.niksun.com

NIKSUN, NIKSUN Logo, and other NIKSUN marks are either registered trademarks or trademarks of NIKSUN, Inc. in the United States and/or other countries. Other product and company names mentioned herein may be the trademarks of their respective owners. For more information, including a complete list of NIKSUN marks, visit NIKSUN's website at [www.niksun.com](http://www.niksun.com). Copyright© 2020 NIKSUN, Inc. All rights reserved. NK-DS-FL-NP-0420