



FlowAggregator™ & NetPoller™

Scalable flow and SNMP monitoring

Features & Benefits

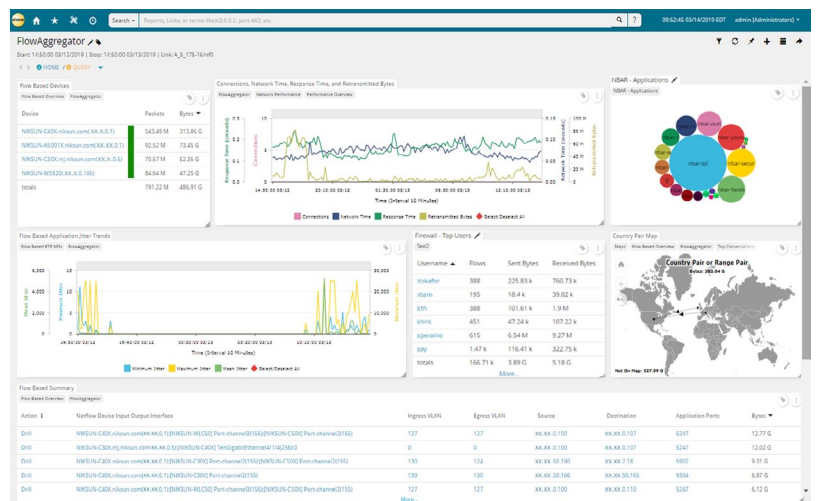
- » End-to-end visibility for capacity, planning, trending, accounting and usage
- » Plug-and-play device with minimal training and no network downtime
- » In-depth analysis, fast retrieval, real-time monitoring and troubleshooting
- » Support for Application Control and Visibility including NBAR (Network Based Application Recognition) and NBAR2 Applications
- » Firewall monitoring with insights into violations, critical denials and bandwidth usage
- » On-demand and scheduled reporting for both real-time operations and strategic decision making
- » Support various NetFlow versions (v5, v7, v9), IPFIX flow format and other flow types like NetStream
- » Support SNMP versions (v1, v2c, v3) in multi-vendor network

FlowAggregator

NIKSUN® FlowAggregator is an advanced flow data collector that incorporates NetFlow and other flow data types into the NIKSUN Network Knowledge Warehouse (NKW) for powerful and reliable performance monitoring, network traffic accounting, usage-based network planning, forensics and reporting.

FlowAggregator supports Application Control and Visibility (AVC flows) with metrics (application usage, Application Response Time (ART), and network time) and VoIP related metrics (jitter and MoS). Paired with NIKSUN NetPoller module, FlowAggregator seamlessly correlates with Simple Network Management Protocol (SNMP) to deliver precise root cause analysis. FlowAggregator intelligently:

- » Supports various NetFlow versions (v5, v7, v9), traffic in IPFIX flow format and other flow types like NetStream, even with extremely high flow rates
- » Manages network devices via logical groups to provide a quicker insight into region, location or type based analysis
- » Collects and analyzes data gathered from application or service on a device such as firewall, users, events, etc.
- » Generates alerts based on any of the flow collected metrics - latency, jitter, packet loss, response time, and network time
- » Provides NBAR insight into application bandwidth utilization, as well as correlates with other AVC metrics

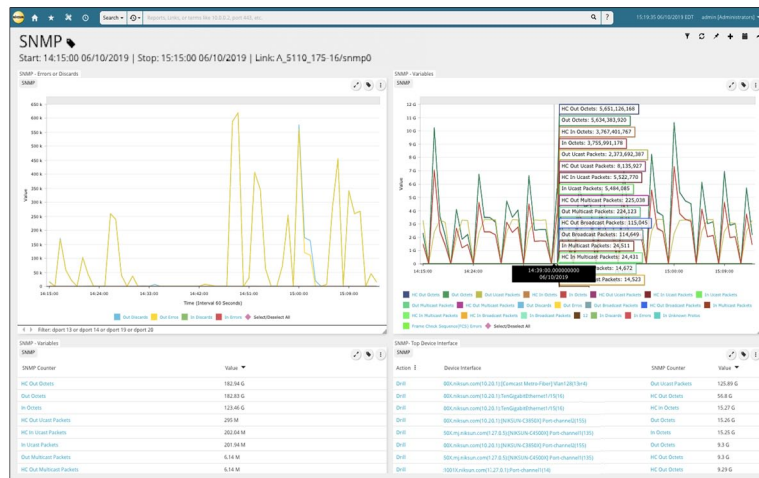


Flow Based Overview

NetPoller

By polling distributed network switches, servers, firewall, and other network components via SNMP, NIKSUN NetPoller generates actionable data and reporting and provides a real-time intelligence across your entire network.

- » Support SNMP versions (v1, v2c, v3) in multi-vendor network.
- » Deliver holistic views of all switch ports including traffic utilization, discards, error data, etc.
- » Unified view of the network (unicast, broadcast, multicast, etc.) with customizable polling intervals and targets.
- » Real-time alerting on errors, discards or any other metrics including port utilization.
- » Support error counters like high capacity counters for broadcast, multicast, unicast packets, incoming/outgoing traffic, errors or discards etc.



SNMP Devices and Groups Distribution Screen

Technical Information

Flow/SNMP Versions/Types Supported: NetFlow (v5, v7, v9), IPFIX, NetStream, and SNMP (v1, v2c, v3)

Form Factors: A variety of 1U & 2U and 4U+ form factors are available. Internal storage scales to tens of terabytes. Unlimited external storage options are available.

Integration: Authentication - TACACS+, RADIUS, LDAP and Active Directory. All NIKSUN products integrate with NIKSUN NetOmni Full Suite for enterprise-wide data aggregation, reporting and visualization.

Interested in learning more?

For more information, please visit us online at niksun.com.



457 North Harrison St. • Princeton • NJ 08540 • USA
t: +1.609.936.9999 • toll free: +1.888.504.3336
f: +1.609.419.4260
info@niksun.com • www.niksun.com

NIKSUN, NIKSUN Logo, and other NIKSUN marks are either registered trademarks or trademarks of NIKSUN, Inc. in the United States and/or other countries. Other product and company names mentioned herein may be the trademarks of their respective owners. For more information, including a complete list of NIKSUN marks, visit NIKSUN's website at www.niksun.com. Copyright© 2019 NIKSUN, Inc. All rights reserved. NK-DS-FL-np-0619